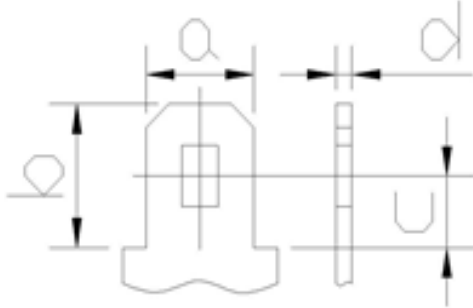


Terminal Type

F Type



F1 [FASTON TAB NO 187]

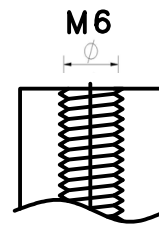
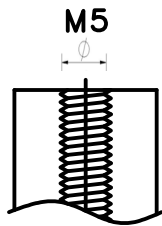
a=4.8 b=6.1
c=3.05 d=0.72

F2 [FASTON TAB NO 250]

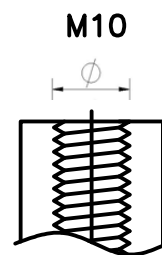
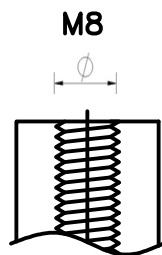
a=6.2 b=8.1
c=3.6 d=0.72

E Type

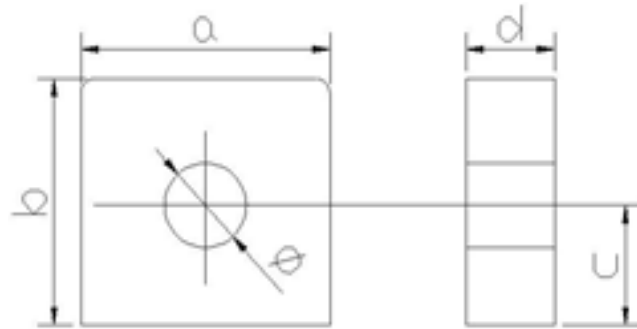
E1		E2	
Material of screw/bolt	Stainless steel	Material of screw/bolt	Stainless steel



E3		E4	
Material of screw/bolt	Stainless steel	Material of screw/bolt	Stainless steel



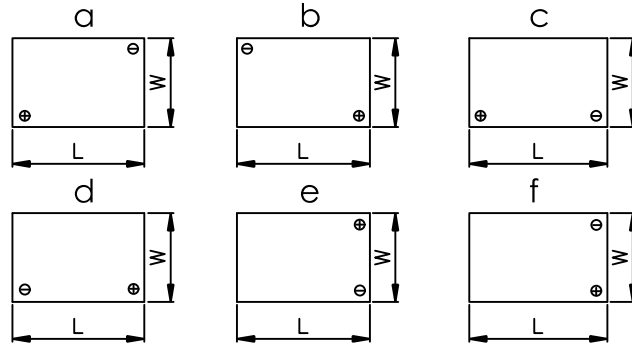
K Type	
Material of screw/bolt	Iron



	a	b	c	d	φ
K1	12	11.5	6	1.7	5.8
K2	14	12	6	2	5.8
K3	16.2	18	10	6	6
K4	18.1	20.4	12	7	6.8
K5	18.1	17.4	8.4	6.5	6
K6	25.1	24.4	13.4	7	9
K7	24	24	13	7.8	8.8
K8	25.4	19	10	7.8	8.4
K9	26.2	25	14	7.8	8.2
K10	26	24	12	5	8.4
K11	26	22.2	12	7.8	8.4

Terminal Position

EK,EKG,EKF



EKL

